

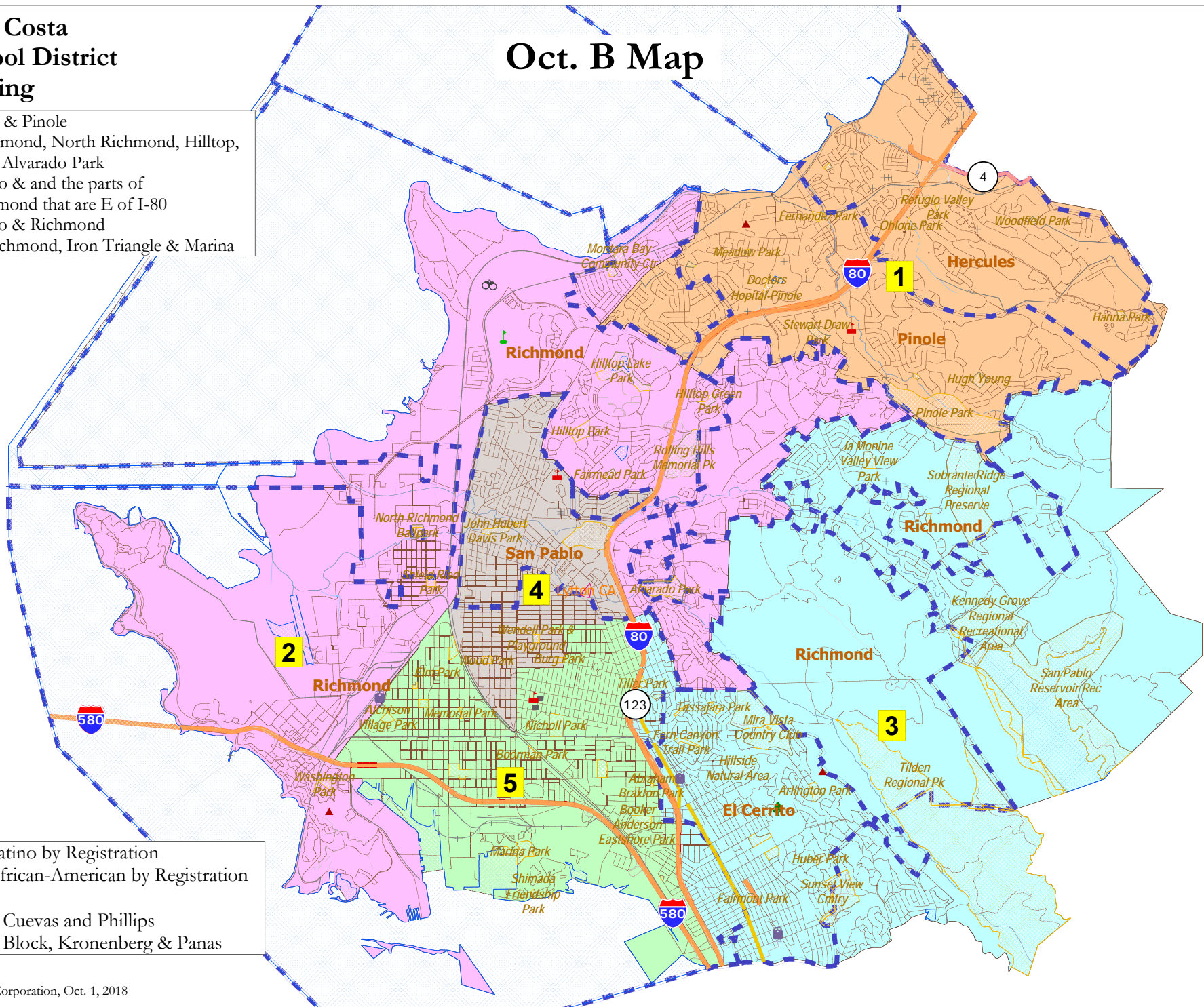
West Contra Costa
Unified School District
2018 Districting

Oct. B Map

Area 1 is Hercules & Pinole
Areas 2 is Pt. Richmond, North Richmond, Hilltop,
Country Club and Alvarado Park
Area 3 is El Cerrito & and the parts of
San Pablo & Richmond that are E of I-80
Area 4 is San Pablo & Richmond
Area 5 is South Richmond, Iron Triangle & Marina

Area 4: 50.8% Latino by Registration
Area 5: 50.3% African-American by Registration

Area 5: Trustees Cuevas and Phillips
Area 3: Trustees Block, Kronenberg & Panas



WCCUSD - October B Map Demographics							
District		1	2	3	4	5	Total
<u>Ideal</u>	Total Pop	45,750	47,575	48,395	45,838	48,289	235,847
47,169	Deviation from ideal	-1,419	406	1,226	-1,331	1,120	2,645
	% Deviation	-3.01%	0.86%	2.60%	-2.82%	2.37%	5.61%
Total Pop	% Hisp	20%	29%	13%	62%	44%	34%
	% NH White	26%	26%	48%	9%	12%	24%
	% NH Black	16%	24%	10%	14%	33%	19%
	% Asian-American	34%	18%	26%	13%	8%	20%
Citizen Voting Age Pop	Total	34,650	32,223	36,396	22,421	27,080	152,771
	% Hisp	17%	22%	10%	43%	23%	22%
	% NH White	29%	33%	53%	16%	21%	32%
	% NH Black	15%	23%	10%	19%	41%	21%
	% Asian/Pac.Isl.	35%	19%	25%	20%	13%	23%
Voter Registration (Nov 2016)	Total	26,275	24,581	32,791	16,713	23,633	123,994
	% Latino est.	24%	21%	11%	50%	26%	24%
	% Spanish-Surnamed	22%	19%	9%	45%	23%	21%
	% Asian-Surnamed	10%	6%	10%	5%	4%	7%
	% Filipino-Surnamed	6%	2%	2%	3%	1%	3%
	% NH White est.	42%	46%	68%	28%	23%	44%
	% NH Black	22%	31%	13%	30%	51%	28%
Voter Turnout (Nov 2016)	Total	19,631	17,652	26,986	10,152	14,814	89,234
	% Latino est.	24%	20%	10%	51%	26%	22%
	% Spanish-Surnamed	22%	18%	9%	46%	23%	20%
	% Asian-Surnamed	10%	6%	11%	5%	4%	8%
	% Filipino-Surnamed	6%	2%	1%	3%	1%	3%
	% NH White est.	43%	47%	69%	27%	25%	47%
	% NH Black	22%	29%	12%	29%	48%	25%
Voter Turnout (Nov 2014)	Total	10,499	9,840	17,401	4,491	8,109	50,340
	% Latino est.	17%	13%	8%	39%	16%	15%
	% Spanish-Surnamed	16%	12%	7%	35%	15%	14%
	% Asian-Surnamed	9%	5%	10%	5%	3%	7%
	% Filipino-Surnamed	4%	1%	1%	3%	1%	2%
	% NH White est.	48%	49%	71%	26%	30%	51%
	% NH Black est.	21%	30%	10%	26%	48%	24%
ACS Pop. Est.	Total	46,938	49,458	50,235	47,826	51,104	245,562
Age	age0-19	21%	23%	19%	28%	28%	24%
	age20-60	56%	56%	54%	57%	58%	56%
	age60plus	23%	21%	27%	14%	14%	20%
Immigration	immigrants	30%	31%	26%	45%	34%	33%
	naturalized	73%	52%	60%	37%	30%	48%
Language spoken at home	english	59%	52%	67%	28%	46%	50%
	spanish	13%	28%	8%	56%	42%	29%
	asian-lang	21%	12%	14%	13%	9%	14%
	other lang	8%	8%	11%	4%	3%	7%
Language Fluency	Speaks Eng. "Less than Very Well"	15%	21%	13%	39%	27%	23%
Education (among those age 25+)	hs-grad	55%	55%	38%	51%	52%	50%
	bachelor	24%	20%	30%	9%	13%	20%
	graduatedegree	11%	10%	26%	3%	7%	12%
Child in Household	child-under18	29%	28%	25%	39%	32%	30%
Pct of Pop. Age 16+	employed	61%	60%	61%	57%	58%	60%
Household Income	income 0-25k	11%	16%	11%	25%	27%	18%
	income 25-50k	16%	20%	15%	29%	27%	21%
	income 50-75k	17%	20%	15%	20%	18%	18%
	income 75-200k	47%	38%	45%	25%	26%	37%
	income 200k-plus	9%	6%	14%	1%	2%	7%
Housing Stats	single family	82%	70%	80%	67%	59%	72%
	multi-family	18%	30%	20%	33%	41%	28%
	rented	26%	45%	34%	56%	60%	44%
	owned	74%	55%	66%	44%	40%	56%
Total population data from the 2010 Decennial Census.							
Surname-based Voter Registration and Turnout data from the California Statewide Database.							
Latino voter registration and turnout data are Spanish-surname counts adjusted using Census Population Department undercount estimates. NH White and NH Black registration and turnout counts estimated by NDC. Citizen Voting Age Pop., Age, Immigration, and other demographics from the 2012-2016 American Community Survey and Special Tabulation 5-year data.							